



**EQI PLANT** SARL

**Electrical Products**  
*pipes, tubing & boxes*

## Company Profile

EQUIPLAST SARL certifies that it produces high quality, first choice, electrical tubes. Electrical tubes from Equiplast are made with the following material: ESSO, BSF, ATO, and Low Density Polyethylene. Electrical tubes range in thickness from 11MM to 36MM.



## About The Raw Material

EQUIPLAST SARL uses different types of raw material in injection molding and film for the production of its electrical pipes, depending on the function of the pipe (LLDPE, Regenere, Non-Flammable and so on). Some of the sources for Raw Material used in electrical pipes are ABS Resin, *Sabic*, Lotrene, Dowlex, Styron Polystyrene and A-Tech. ABS, Anti-Shock and HDPE raw materials are used in the manufacturing of electrical boxes.

## Electrical Pipes & Tubing

EQUIPLAST SARL produces electrical tubes using LDPE (low density polyethylene).

Electrical tubes have a smooth inner surface to allow minimum friction between the electrical cables and the inside of the pipes.

The density of LDPE ranges between 910-940 kg/m<sup>3</sup> and exhibits high flexibility and retention of properties at low temperatures.

Electrical pipes and tubing are designed to enclose and protect wires and electrical cables throughout a house or project, as well as in infrastructure and conducting cables across distances.



## Properties

The properties of LDPE make it a good and viable choice for use in industry and infrastructure; EQUIPLAST manufactures electrical pipes and tubing using mainly LDPE raw material. Some properties of LDPE include:



- Low friction coefficient for long distance cable insertion.
- Suitable for infrastructure due to ease of repair.
- High endurance and flexibility.
- Excellent durability at low temperatures.
- High impact durability.
- Fast and easy installation.
- Environmentally friendly as it can be completely recycled.

## Typical Applications

Electrical pipes and tubing manufactured by EQUIPLAST have several applications:

- Conducting electrical cables in castings and acoustic ceilings.
- Conducting in-wall communication and fire alarm cables.
- Infrastructure and industry.
- Conducting telephone cables.
- Security use.
- Television and cable use.







## Dimensions (in m.m)

Article	Internal Diameter	External Diameter	Thickness
13	13	16	1.50
16	17	21	2.00
19	19	23	2.00
21	21	26	2.50
23	23	28	2.50
29	29	36	3.50
32	32		
36	36		

## Length

Electrical tubes produced by EQUIPLAST range in length as follows:

- 11 to 16m.m Tubes: 25m. to 100m.
- 19 to 23m.m Tubes: 25m. to 100m.
- 29 to 36m.m Tubes: 30m. to 50m.

*\* Other lengths are available upon request!*

## Colors

EQUIPLAST can produce tubes in up to 6 colors as requested by engineers. It should be noted though that by common standards the following color associations apply:



**White: for Security use**

**Orange: for Electrical use**

**Green: for Infrastructure & Industry use**

**Yellow: for Television & Cable use**

**Grey: for Communication & Fire Alarm use**

**Blue: for Telephone use**

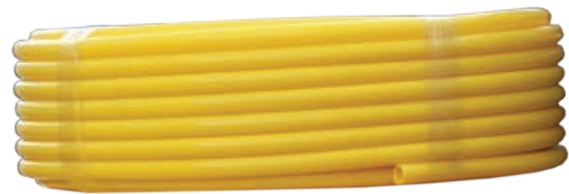
## Tubes - 1<sup>st</sup> Choice

Diameter (in m.m)	Length (in m)	Color
11	30	All Colors
13	30	All Colors
16	30	All Colors
19	30	All Colors
23	30	All Colors
29	30	All Colors
32	30	All Colors
36	30	All Colors

Diameter (in m.m)	Length (in m)	Color
11	50	All Colors
13	50	All Colors
16	50	All Colors
19	50	All Colors
23	50	All Colors
29	50	All Colors
32	50	All Colors
36	50	All Colors

## Tubes - 2<sup>nd</sup> Choice

Diameter (in m.m)	Length (in m)	Color
11	50	GREY
13	50	GREY
16	50	GREY
19	50	GREY
23	50	GREY
29	50	GREY
32	50	GREY
36	50	GREY



## Plastic Coil - Hard

Diameter (in m.m)	Length (in m)	Color
16	50	GREY
20	50	GREY
25	50	GREY
32	25	GREY
40	25	GREY

## Plastic Coil - Normal

Diameter (in m.m)	Length (in m)	Color
16	25	GREY
20	25	GREY
25	25	GREY

\* 16m.m & 20m.m: 10 Coils per Bag

\* 25m.m: 5 Coils per Bag

## Insulating Plastic Coil Cover

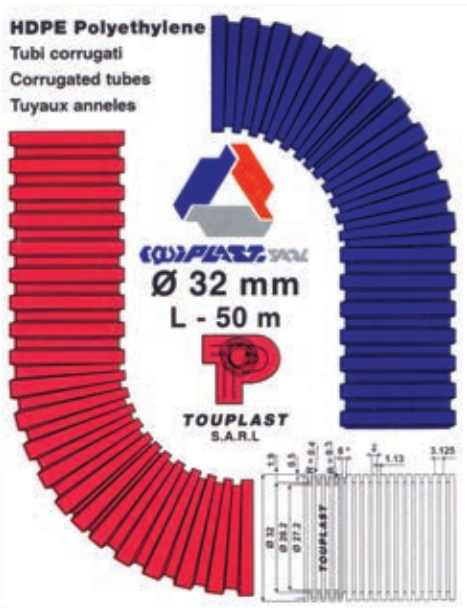
غلاف خارجي عازل - روسور

Description	Diameter (in m.m)	Length (in m)	External Size (in m.m)	Color
COUV. RESS. SEPARABLE	25	50	20.8	RED / BLUE
	28	50	23.2	
	32	50	27.2	
	40	25	34.4	

## Smooth Insulating Plastic Coil Cover - 1st Choice

غلاف خارجي عازل مالمس عادي باب أول

Description	Diameter (in m.m)	Length (in m)	Color
COUV. RESS. SEPA. MINCE	25	50	RED / BLUE
	28	50	
	32	50	

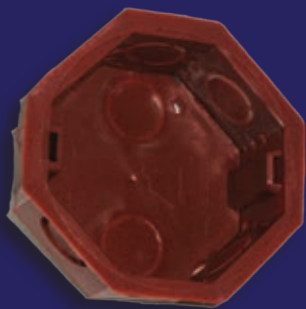




## Usage

EQUIPLAST SARL manufactures different types of electrical boxes to serve different purposes and varied construction needs. EQUIPLAST is committed to producing high quality electrical boxes for the Lebanese market.

Electrical boxes manufactured by EQUIPLAST are designed for indoor and outdoor use, to be attached to the outside of walls, behind walls as well as for other applications. Electrical boxes are essential for the following reasons:



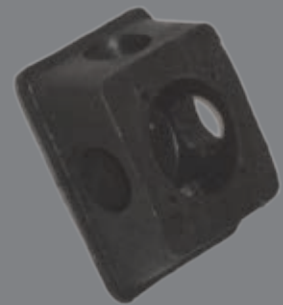
### Enclosure

Electrical boxes allow for proper covering of electrical wires, keeping them out of sight in order to maintain the integrity of a construction as well as for safety reasons.



### Maintenance & Upgrade

Electrical boxes allow for easy access to electrical wires.



### Protection

Electrical boxes are important for grounding electrically charged wires, preventing short circuits and fires

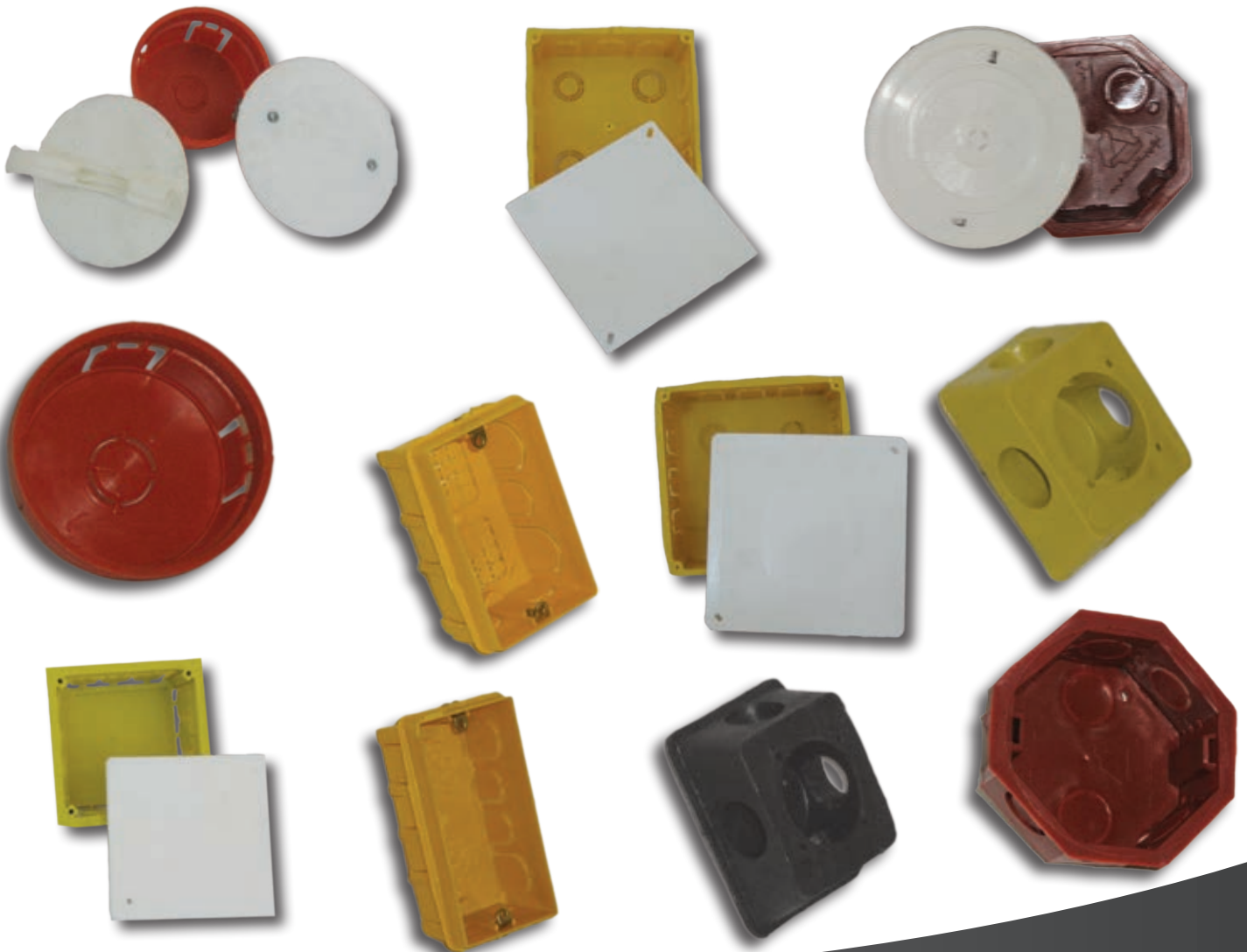
## Benefits

EQUIPLAST's electrical boxes are made of plastic which is a suitable material and has many benefits for this type of product. Plastic boxes are inexpensive and easy to use in both new-work and old-work situations.

## Types

There are different types of Electrical boxes to serve different construction needs. EQUIPLAST provides its clients with a wide variety of high quality boxes.

- **Junction Box:** allows circuits to be safely split and branched into different directions.
- **New-work Box:** installed as part of a new construction.
- **Old-work Box:** designed to be installed after dry-wall has been hung.
- **Outdoor Box:** protects wires from rain, hear, wind and other natural elements.





## Shapes

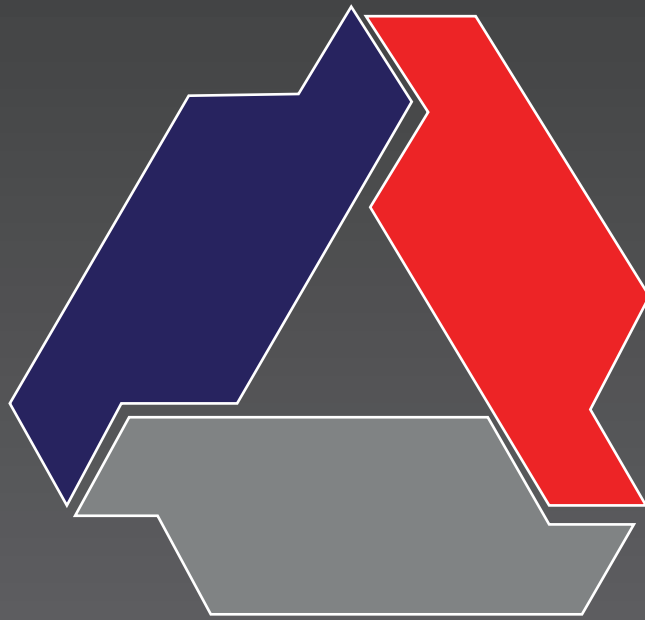
EQUIPLAST provides its customers with electrical boxes in a variety of shapes to suit different purposes.

- **Rectangular Box:** standard shape - houses a single electrical switch or outlet.
- **Square Box:** houses 4 devices: outlet and switch.
- **Round or Octagonal Box:** for lightweight fixtures or devices in the ceiling.
- **Ceiling Box:** for heavy fixtures in the ceiling (such as ceiling fan or chandelier).

<b>Built-in Box 10/10</b> closed - <i>green</i>	<b>Box Cover 10/10</b> <i>white</i>	<b>Rosase Grand</b> <i>white</i>	<b>Fisher</b> <i>6 m.m</i>
<b>Built-in Box 15/15</b> <i>green</i>	<b>Box Cover 15/15</b> <i>white</i>	<b>Rouded Box 70</b>	<b>Box Cover 70</b>
<b>Built-in Box 20/20</b> <i>green</i>	<b>Box Cover 20/20</b> <i>white</i>	<b>Box 8</b>	<b>Box Cover 8</b>
<b>Magic Box</b> 3 Modules - <i>blue</i>	<b>Rosase Petit</b> <i>white</i>	<b>Pather Grand</b> <i>yellow</i>	

*\* It is necessary to seal electrical boxes with the appropriate covers once they have been installed and the wiring is done.*





**EQUIPLAST SARL**

## ADDRESS

CABLE DU LIBAN STR.  
SHEIKH JOSEPH SHEHADE BLDG.  
NAHER IBRAHIM - LEBANON  
**P.O.BOX:** 90299 LEBANON

## PHONE

+961 9 448 980 | +961 9 446 132  
+961 9 448 581 | +961 9 448 583

## MOBILE

+961 3 611 632 | +961 3 649 640

## FAX

+961 9 446 131

## EMAIL

[equiplast@hotmail.com](mailto:equiplast@hotmail.com)



*scan the barcode with mobile  
to view the map*